

# Verbena

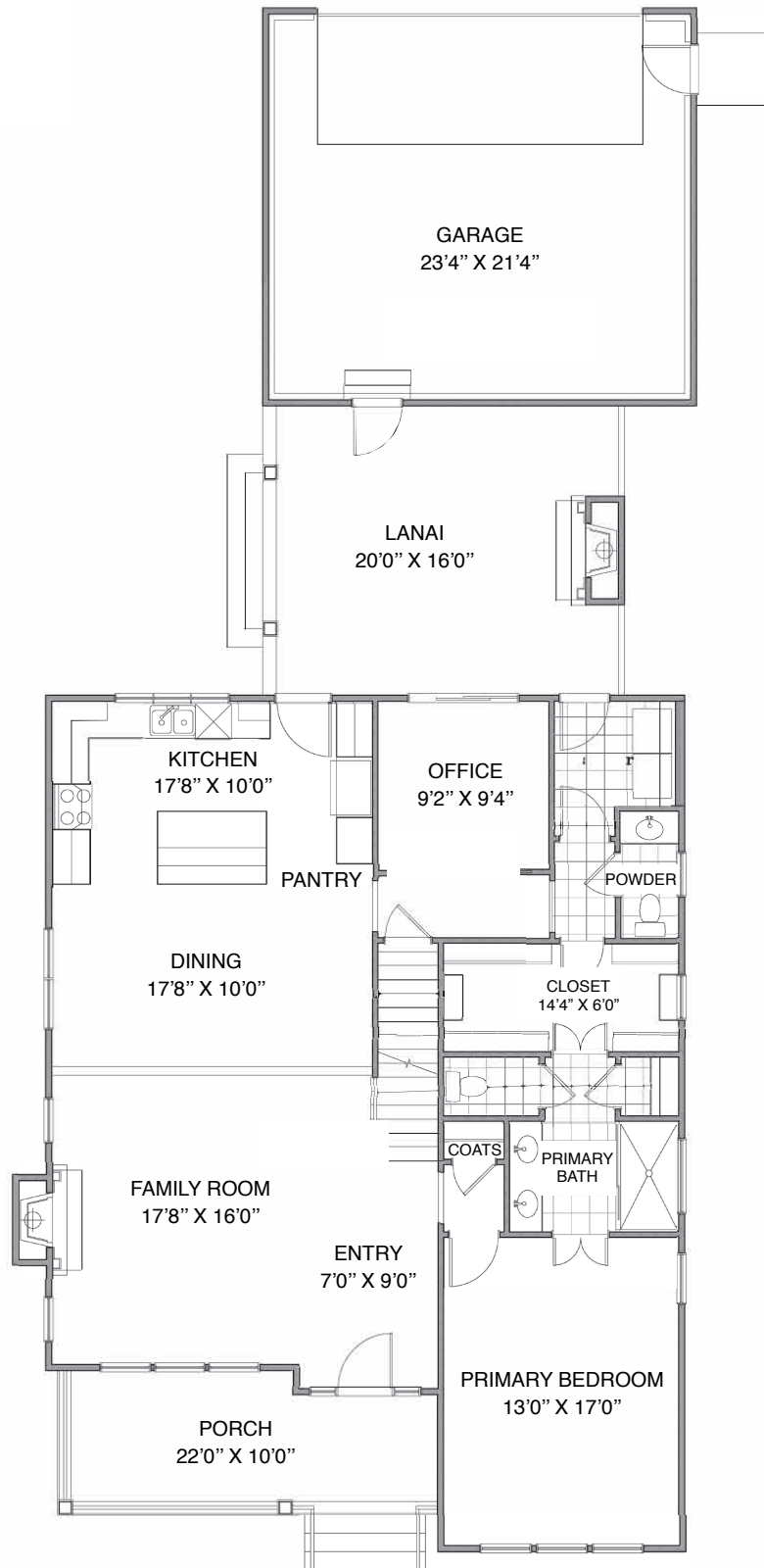


A compact plan that belies its 2327 square footage while maximizing outdoor living. Main living is on the ground floor including primary bedroom and an office. A lanai, with outdoor fireplace, connects the main house and garage. The second floor features two additional bedrooms, loft area, and alcove.

[WALLACECUSTOMHOMES.COM](http://WALLACECUSTOMHOMES.COM)

# GROUND FLOOR

WIDTH: 35'4"  
DEPTH: 85'4"



# FIRST FLOOR

