

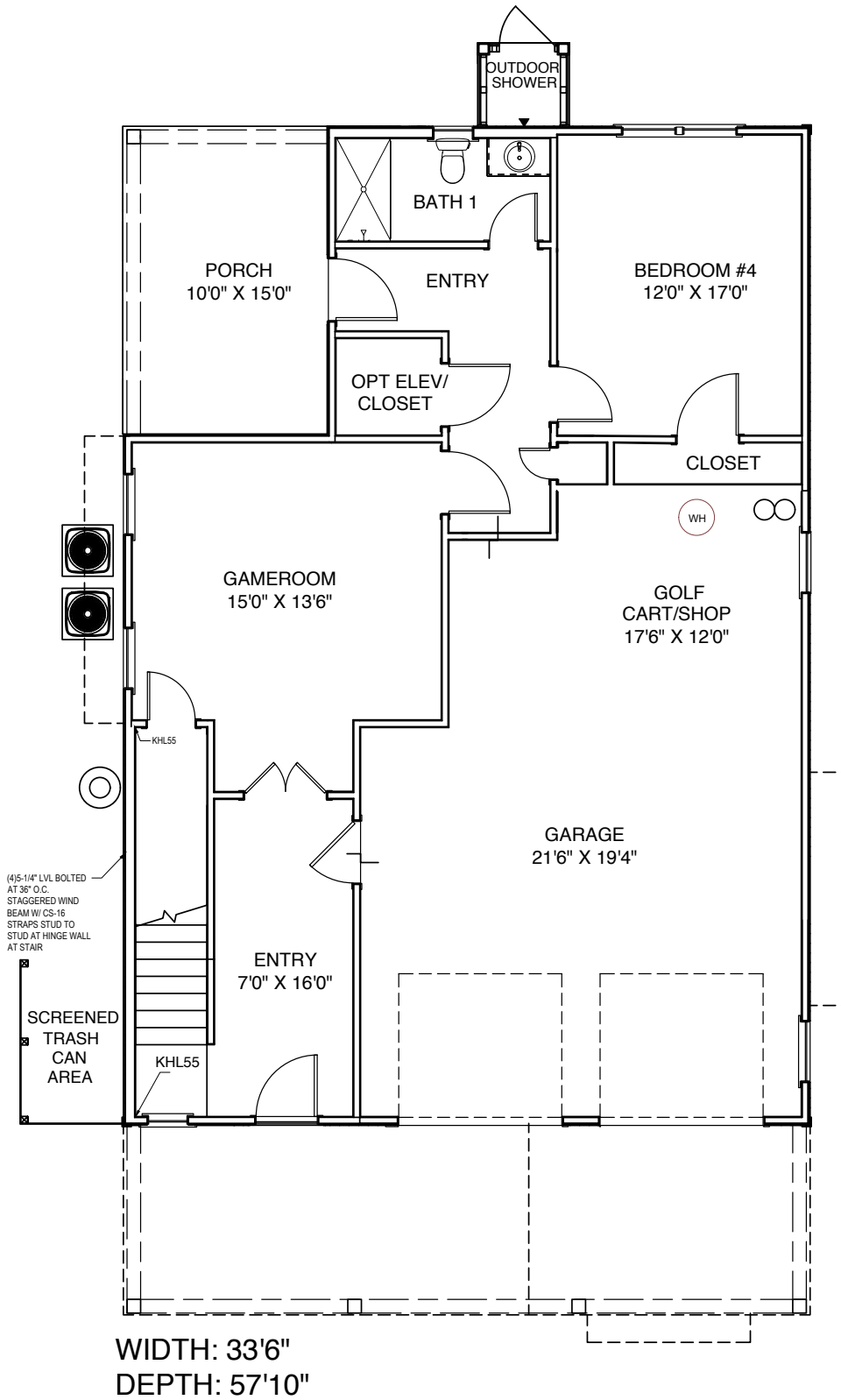
# Sandpiper



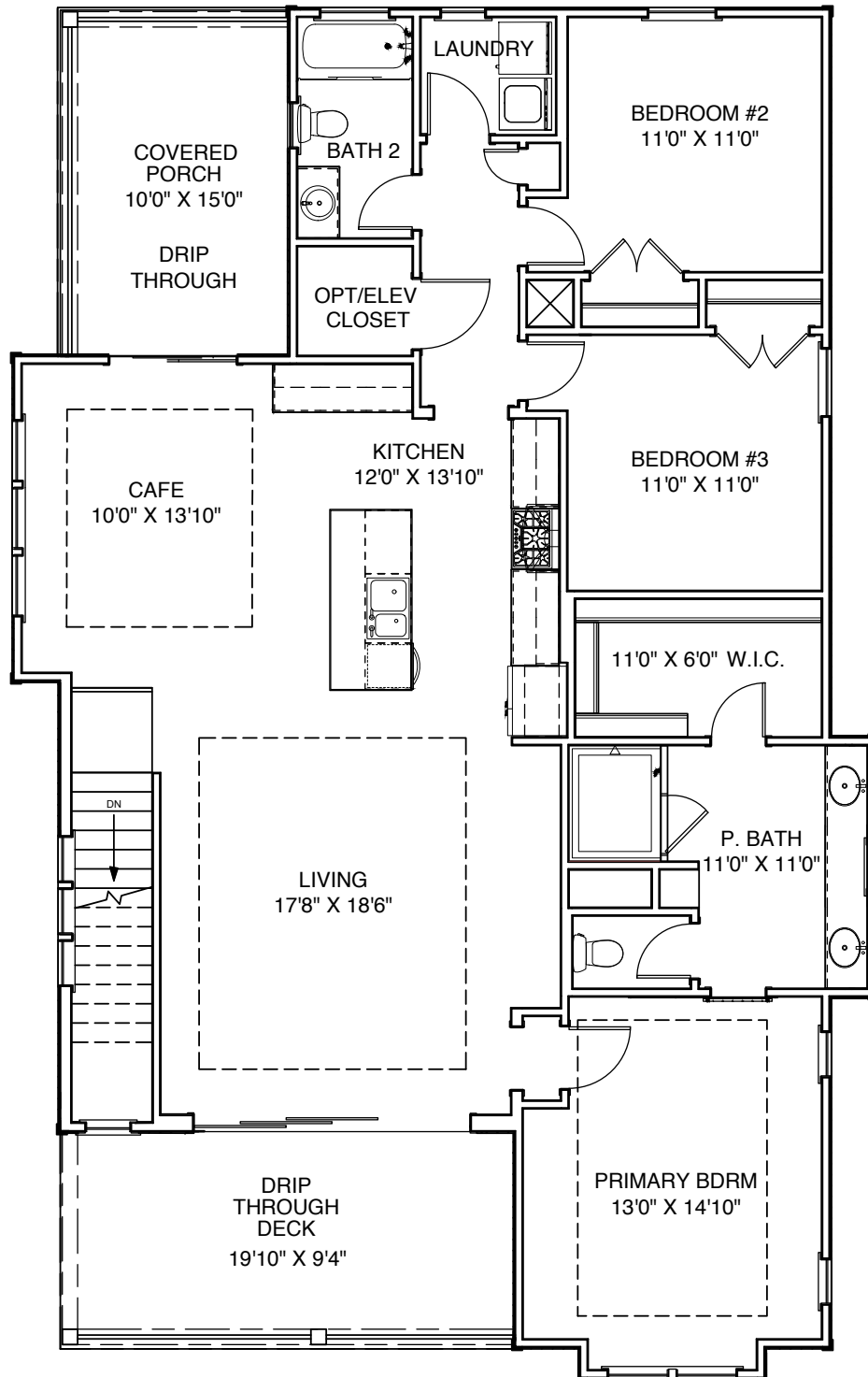
One of our most popular plans offering wonderful versatility on the ground floor room configuration. The covered rear deck off the kitchen and café is perfect for enjoying dining alfresco. The expansive front deck, off the living room, is accessed by a triple, telescoping slider and offers ample room for enjoying outdoor living. Plans range from 2506 to 3000 square feet.

[WALLACECUSTOMHOMES.COM](http://WALLACECUSTOMHOMES.COM)

# GROUND FLOOR



# FIRST FLOOR



# EXTERIOR DRAWING

---



FRONT



BACK



# EXTERIOR DRAWING

---



RIGHT SIDE



LEFT SIDE

